

Scrap Creation Process

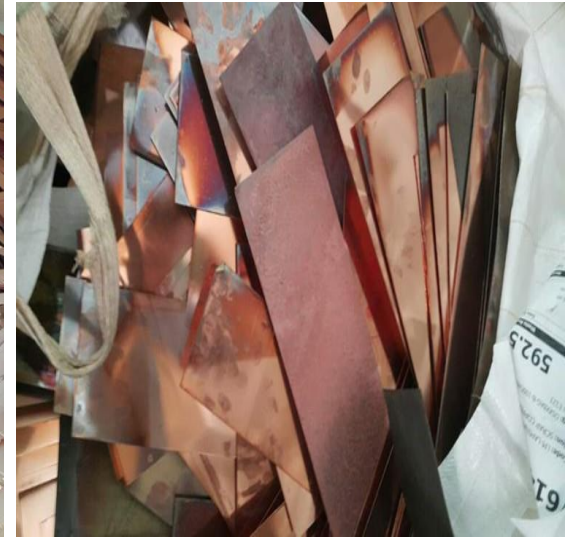
Facility	Product	Creation Process	Scrap Type
*CCL Manufacturer	Cellphone circuit board/module Portable display flexible module Camera module Router Lead frame LED	<ul style="list-style-type: none"> - Drilling - Copper plating - Gold plating - Washing - Dust collector 	<ul style="list-style-type: none"> - Sludge from waste water, dust(ash), scrap (that includes copper, gold, silver) - Defected products, Routers - Slag
PCB Manufacturer			
Semi-conductor / Electronic components Manufacturer			
Precious Metal Analysis(Recycle) Company		<ul style="list-style-type: none"> - Remained residue after processing 	<ul style="list-style-type: none"> - Slag, Sludge, Powder (that includes gold, platinum, palladium)
Plating Company		<ul style="list-style-type: none"> - Remained sludge during/after processing 	<ul style="list-style-type: none"> - Copper, gold, silver, nickel, zinc
Petrochemistry, Oil Company, Automobile Catalyst		<ul style="list-style-type: none"> - Catalyst 	<ul style="list-style-type: none"> - Copper, palladium, nickel, zinc, molybdenum, catalyst
Dental Laboratory		<ul style="list-style-type: none"> - Smelting - Grinding 	<ul style="list-style-type: none"> - Gold, silver powder/slag/dust(ash) created
Waste circuit board collectors			

*CCL : Copper Clad Laminate (ex. copper plate, round copper plate, PCB)

Scraps

CCL

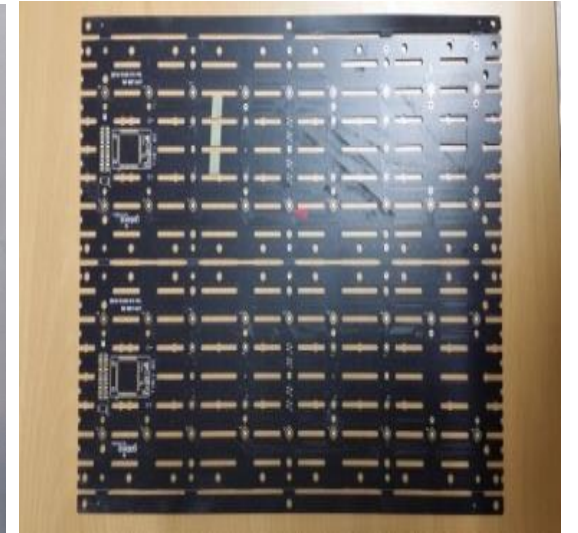
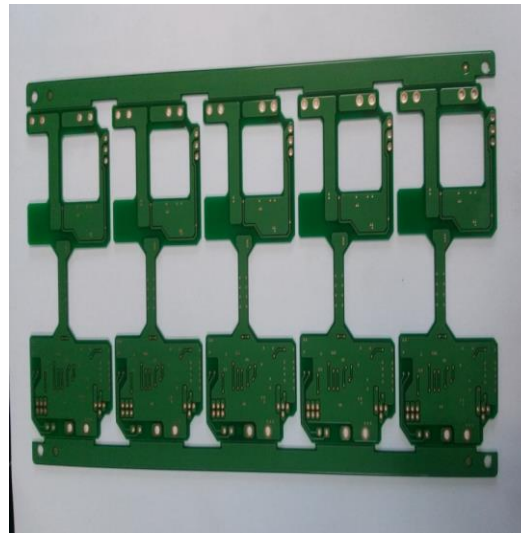
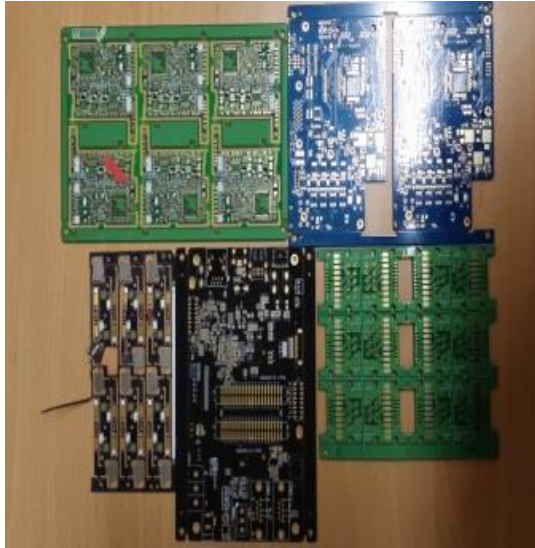
Scraps, dust created while processing



Scraps

PCB

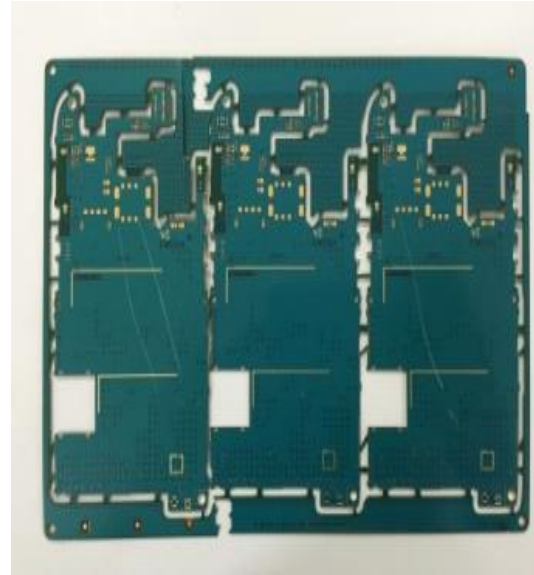
Cellphone circuit board/module
Portable display flexible module
Camera module
Router
Lead frame
LED



Scraps

PCB

Cellphone circuit board/module
Portable display flexible module
Camera module
Router
Lead frame
LED



*Copper ball



Slag/Sludge

Slag/Sludge

PCB Manufacturer

Plating Company

Precious Metal Analysis Company



*Sludge creation from
PCB Manufacturer



HS CODE : 2620

HS CODE			CONTENTS
2620			Slag, ash and residues (other than from the manufacture of iron or steel) containing metals, arsenic or their compounds.
2620	30	0000	Slag, ash and residues. Containing mainly copper. (other than from the manufacture of iron or steel) containing metals, arsenic or their compounds.
2620	99	0000	Other This heading covers slag, ash and residues (other than those of heading 26.18, 26.19 or 71.12) which containing metals, arsenic (whether or not containing metals) or their compounds, and which are of a kind used in industry either for the extraction of arsenic or metals or as a basis for the manufacture of their chemical compounds. They result from the treatment of ores or intermediate metallurgical products (such as mattes) or from electrolytic, chemical or other processes which do not involve the mechanical working of metal. Waste which derives from the mechanical working of metal, or scrap which consists of worn-out or broken metal articles is excluded (Section XIV or XV). On the other hand, scalings, which are essentially oxides although deriving from the mechanical working of non-ferrous metal, also fall in this heading.

HS CODE : 7112

HS CODE			CONTENTS
7112			Waste and scrap of precious metal or of metals clad with precious metal; other waste and scrap containing precious metal or precious metal compounds, of a kind used principally for the recovery of precious metal.
7112	91	9000	Of gold, including metal clad with gold but excluding sweepings containing other precious metals
7112	99	9000	<p>Other</p> <p>This heading covers waste and scrap in metallic form fit only for the recovery of the precious metal, or for use as a basis for the manufacture of chemicals. The heading also covers waste and scrap of any material containing precious metal or precious metal compounds, of a kind used principally for the recovery of precious metal. It includes, in particular :</p> <p>(A) Ash containing precious metal or precious metal compounds, arising from the incineration of photographic films, printed circuit boards, etc.</p> <p>(B) Waste and residues derived from the mechanical working of precious metal or of metal clad with precious metal, in mints, goldsmiths', silversmiths', jewellers' workshops, etc., for example, sweepings, dust, lemls, shavings, etc., resulting from shaping, drilling, working, etc.</p> <p>(C) Scrap of worn-out or broken articles (tableware, goldsmiths' or silversmiths' wares, catalysts in the form of woven gauze, etc.) no longer fit for their original use. It does not extend to those which, with or without repair or renovation, can be reused for their former purposes, or which can be converted for other uses without being subjected to processes for the recovery of precious metals.</p> <p>(D) Waste and scrap of photographic plates, film, paper, paperboard or textiles, containing precious metal in metallic form or in the form of compounds (e.g., silver halides).</p> <p>(E) Waste and scrap of electronic circuit boards and similar carriers containing precious metal (e.g., gold or silver).</p> <p>(F) Residues of metallurgical, electrolytic or chemical processes, containing precious metal (e.g., slags, sludges from electrolytic refining and plating, silver residues from photographic fixing baths).</p>