





## CONTEXT

1. COMPANY OVERVIEW & RECORDS
2. VISION AND AIM
3. PURCHASING ITEM
4. LOCATION AND CONTACT

# 1. COMPANY OVERVIEW & RECORDS

 JUN, 2008

FOUNDATION AS AIM HIGH INC.

 JAN, 2013

MERGER AND ACCEPTANCE OF CNB CORPORATION (ELECTRIC CONSTRUCTION) AND RENAME AS AIM HIGH KOREA INC. (WASTE TRADER AND WHOLESALER)

 JUN, 2017

APPOINTMENT OF NEW CEO, MR. SJ CHO



TOTAL SALES VOLUME (~DEC. 2016) : USD 60,000,000



MAIN MARKETS: NORTHEAST ASIA, MIDDLE EAST, EUROPE, CENTRAL AND SOUTH AMERICA



MAIN ITEM: FERROUS AND NON FERROUS METAL SCRAPS

## 2. VISION AND AIM

- ❏ TOP PRIORITY IN RESOURCE RECIRCULATION AND ENVIRONMENTALLY SOUND MANAGEMENT
- ❏ GROWTH TO THE WORLD BEST RECOGNIZED FERROUS AND NON FERROUS METALS DEALER BY ENHANCING TEAM WORK, DEVELOPING PERSONNAL TALENT AND PASSION
- ❏ PERSUIT OF TRUST, TRANSPARANCY, EFFICENTY IN DOING BUSINESS
- ❏ BE BRAVE!



# 3. PURCHASING ITEM

## 3-1. LEAD ACID BATTERY SCRAP (WET, RINK)



- ISRI CODE : RINK
- RAW MATERIAL FOR LEAD INGOT TO BE USED FOR NEW BATTERIES
- CLASSIFIED AS HAZARDOUS MATERIAL AND STRICTLY CONTROLLED ACCORDING TO THE BASEL CONVENTION
- IT IS NECESSARY TO PACK WITH SHRINKED PLASTIC AROUND THE STACKED BATTERY PALLET AND INSIDE OF CONTAINER IN ORDER TO PREVENT EXPECTED DAMAGES BY ACID SPILLAGE

## 3-2. LEAD ACID BATTERY SCRAP (DRAIN, RAINS)



- ❏ ISRI CODE : RAINS
- ❏ RAW MATERIAL FOR LEAD INGOT TO BE USED FOR NEW BATTERIES
- ❏ CLASSIFIED AS HAZARDOUS MATERIAL AND STRICTLY CONTROLLED ACCORDING TO THE BASEL CONVENTION
- ❏ ACCEPTABLE LOOSE OR PALLET PACKING IN 20 FEET CONTAINER

## 3-3. HMS: METAL SCRAP



- IT IS CLASSIFIED INTO VARIOUS QUALITIES.
- TO AVOID CONTAINER DAMAGE AND TO BE EASILY SMELTED IN THE FURNACE, IT IS RECOMMENDABLE FOR BIG PIECES OF METAL SCRAPS TO BE CUT AS 30CM\*120CM



## 3-4. AL-CU RADIATOR (TALK)



- ❏ ISRI CODE : **TALK**
- ❏ **COPPER AND ALUMINUM CAN BE RECYCLED**
- ❏ **ACCEPTABLE BOTH CLEAN TALK AND TALK WITH IRON**
- ❏ **SOFT BALE IN 20 OR 40 FEET CONTAINER**





## 3-5. USED BEVERAGE CANS (UBC)



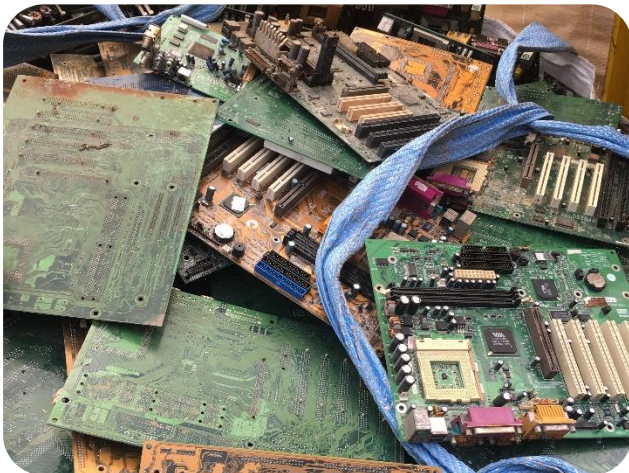
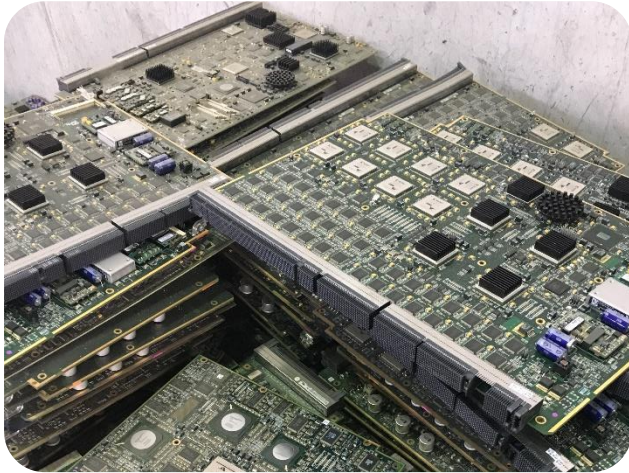
ONLY ACCEPTABLE USED ALUMINUM BEVERAGE CANS. OTHER IMPURITIES SUCH AS METAL CAN MUST BE EXCLUDED



20 OR 40 FEET CONTAINER STUFFED WITH BRIQUETTED BALE



## 3-6. E-SCRAP



- RECYCLE THE VALUABLE MATERIALS SUCH AS COPPER, ALUMINUM, LEAD, GOLD, SILVER ETC
- IT CLASSIFIES AS HAZARDOUS MATERIAL SO THAT GETTING CORRESPONDING PERMIT FROM COMPETENT AUTHORITY ACCORDING TO THE BASEL CONVENTION IS OBLIGATORY TO DO THE TRANSACTION
- PACKING WITH TON BAG



## 3-7. SLUDGE



THIS HEADING COVERS SLAG, ASH AND RESIDUES WHICH CONTAINING METALS, ARSENIC (WHETHER OR NOT CONTAINING METALS) OR THEIR COMPOUNDS, AND WHICH ARE OF A KIND USED IN INDUSTRY EITHER FOR THE EXTRACTION OF ARSENIC, COPPER, TIN, ETC.

AS A BASIS FOR THE MANUFACTURE OF THEIR CHEMICAL COMPOUNDS, WASTE WHICH DERIVES FROM THE MECHANICAL WORKING OF METAL, OR SCRAP WHICH CONSISTS OF WORN-OUT OR BROKEN METAL ARTICLES IS EXCLUDED.



## 3-8. OTHERS



**LEAD PIPE**



**LEAD PLATE**



**LEAD DROSS**



**COPPER**



**ALUMINUM WHEEL**



**ALUMINUM WHEEL**



## 3-8. OTHERS



# 4. LOCATION AND CONTACT

Address : A-1001, TIME BRIDGE, 12,  
JEONGJAIL-RO 156BEON-GIL,  
BUNDANG-GU, SEONGNAM-SI,  
GYEONGGI-DO, REPUBLIC OF KOREA  
(ZIP: 13558) [www.aimhighkorea.com](http://www.aimhighkorea.com)

Tel. +82-31-714-0884

Fax. +82-31-714-0889

E-mail: [scrap@aimhighkorea.com](mailto:scrap@aimhighkorea.com)

How to get :  
BUNDANG SUBWAY(YELLOW) AND/OR  
NEW BUNDANG SUBWAY (RED),  
“JEONGJA STATION”, WALKING 50M  
FROM GATE 3







THANK YOU!!